

WHAT'S ON AT CIRCA

THE MESSY MAGIC ADVENTURE

Spray and Wipe are two very sensible cleaners. Until the day that one mistake turns EVERYTHING topsy-turvy. Now magic is on the loose and the audience must help get it back in the box, as the house gets messier and messier!

By David Ladderman and Lizzie Tollemache
9 - 20 Jul | \$15 Under 2's are free | Circa Two
11am + 1pm Tues – Sat (no shows Sun or Mon)

SENSE AND SENSABILITY

A classic tale of sisters, suitors and losing your senses. Six spectacular women breathe life into 24 characters in this colourful romp through the British Regency period. Left destitute on their father's death, sensible Elinor and madly passionate Marianne are seeking true love and happiness – but just what secrets are the gentlemen hiding behind their flannel waistcoats?

By Jane Austen, Adapted by Penny Ashton
6 Jul - 3 Aug | \$30-55 | Circa One
Tues – Thurs 6.30pm, Fri – Sat 8pm, Sun 4pm

LEAVE 'EM LAUGHING

36 years ago Jane Keller followed her heart and emigrated to New Zealand bringing her fabulous talents to our shores. Comedy ensued. Join Jane and pianist Michael Nicholas Williams for the best of Jane's 25+ years of collaboration in this marvelous musical memoir. Guaranteed to make your heart sing and leave you laughing for Jane's final show.

Created by Jane Keller and Michael Nicholas Williams
27 Jul - 17 Aug | Circa Two | \$25 - \$38
Tues – Sat 7.30pm, Sun 4:30pm



The NeuroSpice Girls

By Lizzie Tollemache

Directed by Rachel Lenart

Sun 7 July | Circa Two



The NeuroSpice Girls

By *Lizzie Tollemache*

A funny and ferocious neurodivergent odyssey, from gut punching denial to celebration...and how it's extremely annoying that there's a bit more to healing than getting a diagnosis, waving round a crystal and overusing the word "boundaries."

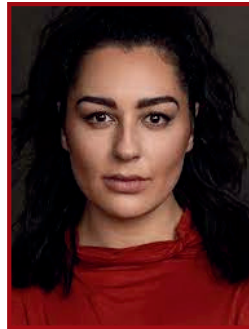
The Cast



Waitahi Aniwaniwa
McGee (They/Them)



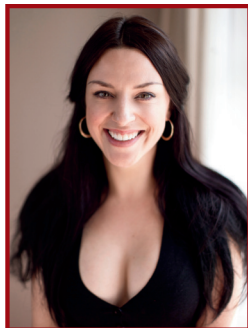
Bek Coogan
(She/Her)



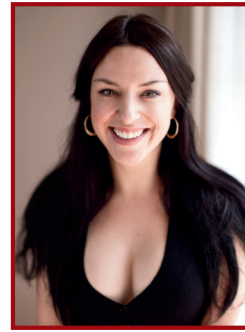
Emma Katene
(She/Her)



Mel Dodge
(She/her)



Lizzie Tollemache
(She/Her)



About the Playwright – Lizzie Tollemache

Lizzie is a sideshow stuntwoman, theatre maker, and arts leader. Queer and neurodivergent, she's been genre-defying from the get go with an early career grounded in Shakespeare, improvisation and circus. Lizzie co-founded Rollicking Entertainment Ltd in 2014 and is the Creative Director; creating, producing and touring nine original productions with the company to theatres and festivals across NZ, Australia, the UK, UAE and Canada.

Her playwriting credits include *Mr and Mrs Alexander: Sideshows and Psychics*, *The Messy Magic Adventure*, Rollicking Entertainment's *Treasure Island* and *The Dunstan Creek Haunting*. As an actor and director, she has worked with The Court Theatre, Centrepont Theatre, Potted Productions, Fortune Theatre (RIP) and toured for several years as a motivational speaker across UK universities. Lizzie spent two years as Associate Director of Centrepont Theatre and is now an in-demand performer, director, writer and dramaturg across the creative industries.

Presented by Rollicking Entertainment Ltd

Rollicking is a theatre and production company which has spent the last ten years creating and producing shows for original work for children (*The Messy Magic Adventure*, *Kitchen Chaos*, *Bathtime Bubbles*), adults (*Mr and Mrs Alexander: Sideshows and Psychics*, *Seven Deadly Stunts*, *The Dunstan Creek Haunting*), outdoor theatre (*King Arthur*, *Treasure Island*) and cabaret/variety acts (*Splore*, *CubaDupa*, Auckland Arts Festival, Beervana, World Buskers Festival, Dubai International Comedy Festival, Edinburgh Fringe, Taranaki Festival of Lights).

The company has previously produced six Circa seasons, two Canadian tours, three collaborations with Auckland Live, five World Buskers Festival shows, and toured productions to dozens of arts festivals across the country.